

# Thomasville® Classic

CABINETS, INC.



**MASTER BRAND**  
CABINETS, INC.

**The Thomasville Report**

**November 2022**

Visit us at  
[thomasvillecabinetry.com](http://thomasvillecabinetry.com)  
Or  
<https://www.THAHD.com>

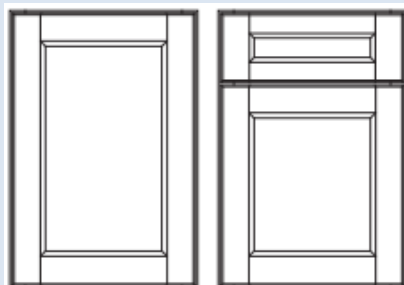
## Embree Maple



**CTNAC**

Cotton Amaretto Creme

- 3” wide door rails
- 1-1/4” full overlay
- 5pc drawer front standard w/ 1/2” veneer center panel
- Outer edge profile on door and drawer adds traditional detailing on a transitional style door
- Optional Slab drawer front (pg.46)
- Optional Slab Top drawer front (pg.47)



wall

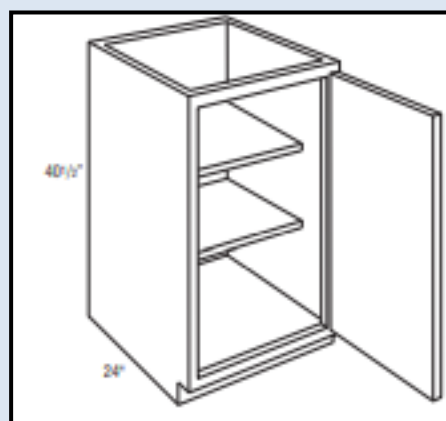
base

Optional Drawer Front: Slab (DFSLB)

Maple \$304/LF  
Cherry \$323LF

**PG.9**

## Full Height Base Single Door 40-1/2” high



- Two Adjustable 15” Deep Shelves
- Perfect for additional storage on the back of a deep island
- Great accessibility for large bulky kitchen appliances
- 40-1/2” tall, 24” deep

**B1240FH L or R**  
**B1540FH L or R**  
**B1840FH L or R**  
**B2140FH L or R**  
**B2440FH L or R**

**PG. 162**

**TH&A**

Todd Haley & Associates

Adam Johnson  
678-736-9934

[ajohnson@toddhaley.com](mailto:ajohnson@toddhaley.com)

Paul Cunningham  
615-681-2686

[pcunningham@toddhaley.com](mailto:pcunningham@toddhaley.com)

Thomas D. Clarke, CKD  
225-240-0529

[tclarke@toddhaley.com](mailto:tclarke@toddhaley.com)

Ginny Edens  
770-424-7518

[gedens@toddhaley.com](mailto:gedens@toddhaley.com)

## What Designers are saying about Thomasville:

Denice Kritzer HD2303 Lexington KY

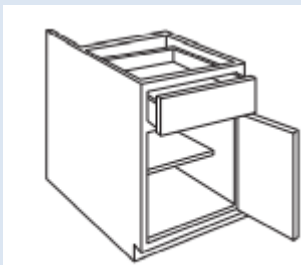


“I tell my customers that Thomasville cabinets are built better because they are. I love the finishes and doors styles offered by Thomasville. Customer service is important to me too and I feel that they have my back from being to end. I sell Thomasville cabinets”.



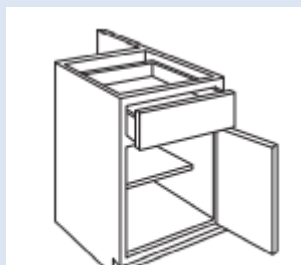
## MODIFICATIONS

**EXBKL –end extended back left**  
**EXBKR –end extended back right**



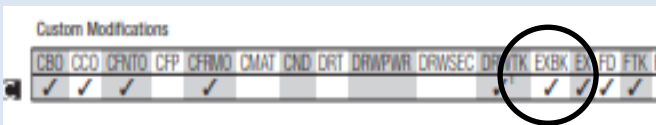
Base cabinets (EXBKL)

- Most wall, base, tall, and vanity cabinets
- EXBKL and EXBKR compatible with each other and can be specified with either the same dimension per side or unique dimensions. Also compatible with AUTH when end is specified in 3” increments



Base cabinets (EXBKR)

- **FPEB standard**
- Extend in 1” increments up to 6” per



PG.53

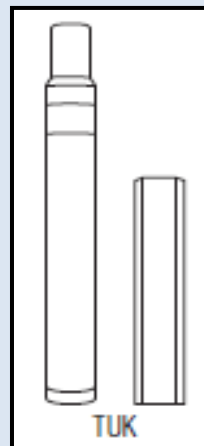
## EMBELLISHMENTS

### Touch Up Tools

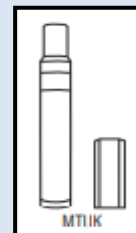
**TUK –touch up kit**  
**MTUK –mini touch up kit**

### GLAZEPEN

- Touch-up Kit includes a full size touch up marker and an 8 cm fill stick. **A small Glaze pen is also included with TUK when glaze finishes are ordered.** TUK must be ordered separately.
- **Mini touch-up kit is included with all kitchen sink base cabinets.** Glaze pen NOT included.



TUK

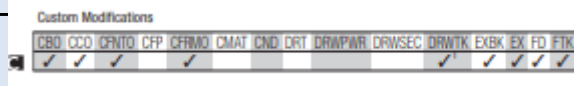


MTUK

- **GLAZEPEN available in glaze colors only.** It works on finished doors and does not require a separate top coat.
- TUK and MTUK match box color in Greyhound, Ravine, Talon, Wishbone, and Wool

PG.490

Thank you for selling your House Brand, Thomasville Cabinetry! We are your partners to help you with the sale



**TH&A**

Todd Haley & Associates



MASTERBRAND  
 CABINETS, INC.