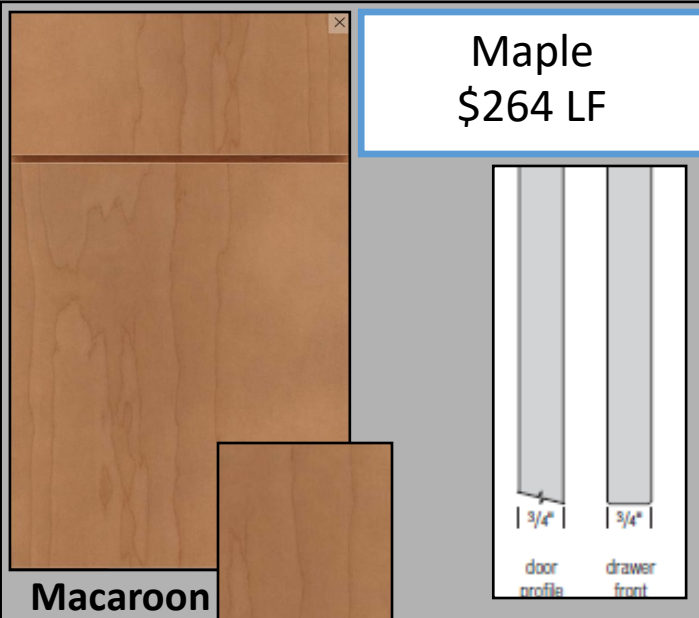
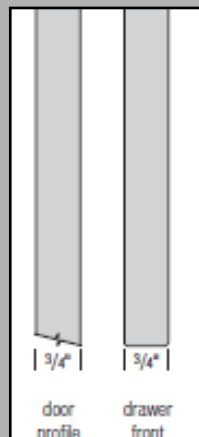


April 2023 Training Agenda

Madsen Maple Macaroon



Macaroon



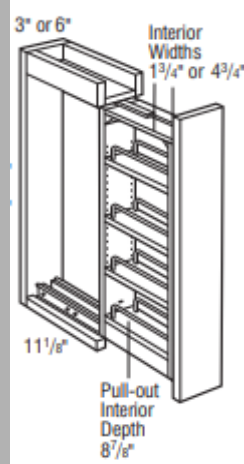
- Veneer Slab Door
- Veneer Slab Drawer Front
- 1 1/4" Full Overlay
- Veneer Edging on All Edges
- Vertical Grain Direction

Pg. 15

Wall Box Column Pullout Overlay

WBCPO330OL; WBCPO630OL

Page 137



- Available 3" and 6" wide, 30" tall
- All styles feature a natural finish full extension wood pull-out with adjustable shelves and chrome rail sides.
- Overlay application includes profiled full overlay filler. Everly PureStyle overlays will be painted hardwood
- Overlay application not compatible with face mount moulding
- Filler is included, but unattached.
- Recommend installation between two cabinets. Can be installed on the end of a run or adjacent to an appliance with a 3/4" thick end panel.
- In order to allow proper clearance for opening and closing, allow an additional 1/8" space between adjacent cabinet face frames. The 3" wide pull-outs require 3 1/8" space and the 6" wide pull-outs require 6 1/8" space. Spacers are included with the pull-outs to allow for proper installation.



Thomasville Studio 1904

a modern, vintage vibe cabinetry offering that is exclusive to Home Depot!

Thomasville Studio 1904
CABINETS

Things I Love About Studio! Gail Olney HD_0138 Griffin, GA

I have been designing kitchens and baths with *Thomasville* for over 20 years. I appreciate so much the quality of the cabinets and the service.

“You don’t have to be a champion to start, but you have to start to be a champion”

Modifications

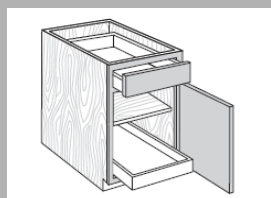
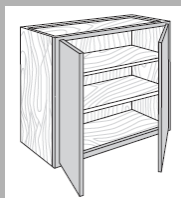
MIP– Matching Interior Plywood

Modifies the cabinet interior and end panel exterior to matching finished veneer plywood. Cabinet top and bottom exterior on wall cabinets is also matching finished veneer plywood.

Cabinet construction features plywood ends, top, bottom, and back. Shelves are upgraded to full depth 3/4" veneered plywood.

Interior wood accessories feature a natural finish and will not match cabinet exterior

When a cut-for-glass or mullion door option is chosen in 20-20, Matching Interior Plywood (MIP) is a preselected option. If MIP is not desired, it can be deselected by choosing NOTMIP.



PG.51

Embellishments

Cabinet Care Kit (PURE&SIMPLE™)

CABCLEANKIT

- PURE&SIMPLE™ Cabinet Care Kit includes one 16 ounce spray bottle of cleaning solution and a small microfiber cloth.
- Safe for use on wood and laminate cabinet surfaces.



PG. 490

Thank you for selling your House Brand, Thomasville Cabinetry! We are your partners to help you with the sale every time! Visit your web page <https://www.THAHD.com>

TH&A

Todd Haley & Associates



MASTERBRAND
CABINETS, INC.