

Thomasville Classic

CABINETS, INC.



MASTER BRAND
CABINETS, INC.

The Thomasville Report

April 2022

Visit us at
thomasvillecabinetry.com
Or
<https://www.THAHD.com>

Blythe MDF Nautical

PG.7

- ◆ 1-1/4 Full Overlay Slab Door and Drawer Front
- ◆ MDF core is standard when choosing MDF door
- ◆ Veneer face and back with wood edging on all Edges (Maple & Cherry)
- ◆ Furniture board core standard with maple and cherry

MDF \$276 LF

MAPLE \$297 LF

CHERRY \$342 LF

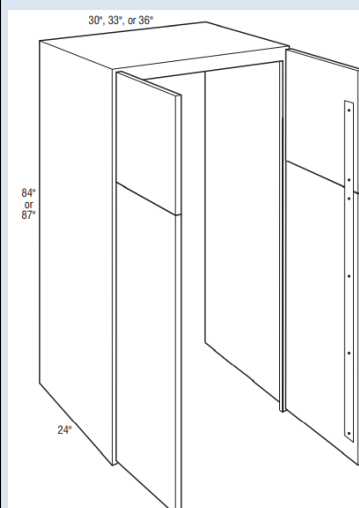
**NOTE: Grain Direction
Stained Maple & Cherry**

← DRAWER FRONTS: HORIZONTAL

← DOORS: VERTICAL



Walk Thru Pantry

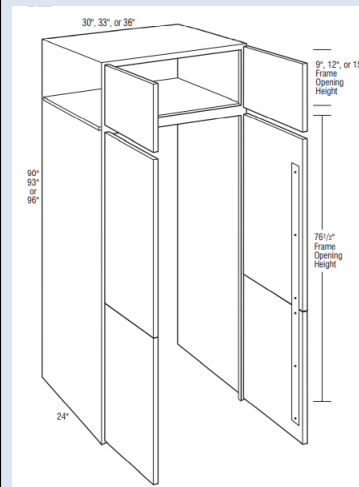


PWT __ 8424

PWT __ 8724

30", 33", 36" WIDE

Doors are braced together; 107* Quiet-Close hinges; Can be reduced to 9" or increased to 27" deep; AUTH mod is available using standard tall door configuration (does not align with front doors)



PWT __ 9024

PWT __ 9324

PWT __ 9624

30", 33" 36" WIDE

Upper section has a back, CG & Glass inserts are available (upper). Clearance hgt is 6'4.5" inside. Must consider installation hgt too.

PGS. 281-282

TH&A

Todd Haley & Associates

Adam Johnson
678-736-9934

ajohnson@toddhaley.com

Paul Cunningham
615-681-2686

pcunningham@toddhaley.com

Thomas D. Clarke, CKD
225-240-0529

tclarke@toddhaley.com

Ginny Edens
770-424-7518

gedens@toddhaley.com



What Designers are saying about Thomasville:

“Thomasville offers a wide range of doors, finishes and options for all customers . I can design their dream kitchen and offer them many product options”.

Donna Caldwell —HD4609 Roanoke, VA



“I believe in looking reality straight in the eye and denying it. ”

— Garrison Keillor




MODIFICATIONS

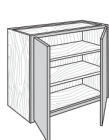
MIP-matching interior plywood*

This option modifies the cabinet interior and end panel to matching finished veneer plywood* as well as the cabinet top and bottom exterior on wall and tall cabinets. Cabinet construction features plywood ends, top, bottom, and back. Shelves are upgraded to 3/4" veneered plywood*. Most ends panels with fillers attached will replace standard panel material with veneer plywood* finished on both sides.

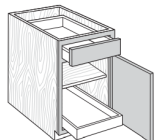
*Please note: All-plywood components meet ANSI/HPVA HP-1 standards, and may contain MDF or particleboard.

Pg. 50

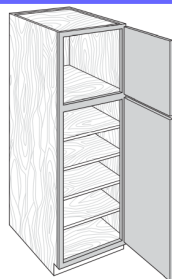
-  matching finished veneer
-  standard matching finished component
-  standard non-matching finished component



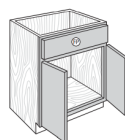
Most wall cabinets



Most base cabinets



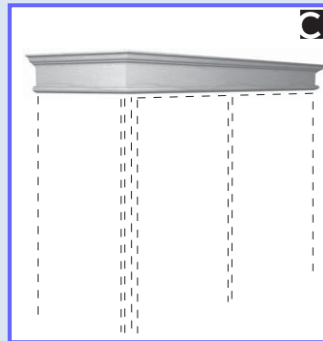
Most tall cabinets



Most vanity cabinets

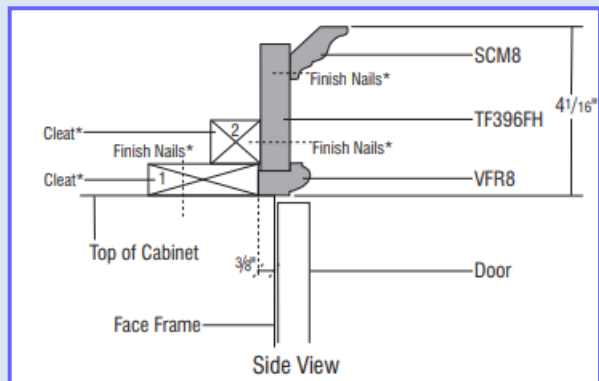
EMBELLISHMENTS

STKMLD18



◆ Overall moulding height is 4-1/16" but can be reduced in the field by trimming the height of the TF396FH. Field assembly required. Cleats not included.

Pg. 417



Technique Options

	Distressing	Heirlooming
SCM8	✓	✓
TF396FH	✓	
VFR8		✓

Availability Options

	Cherry	Maple	MDF	Oak	Painted	PureStyle™	Rustic Alder	Rustic Hickory	Specialty Laminates
SCM8	✓	✓	box color	✓			✓	✓	box color
TF396FH	✓	✓	box color	✓			Alder	Hickory	box color
VFR8	✓	✓	box color	✓			Alder	Hickory	box color

Thank you for selling your House Brand, Thomasville Cabinetry! We are your partners to help you with the sale every time! Visit your web page <https://www.THAHD.com>

TH&A

Todd Haley & Associates



MASTER BRAND
CABINETS, INC.