

Thomasville[®] Artisan

CABINETY



MASTERBRAND
CABINETS, INC.

The Artisan Focus

February 2023

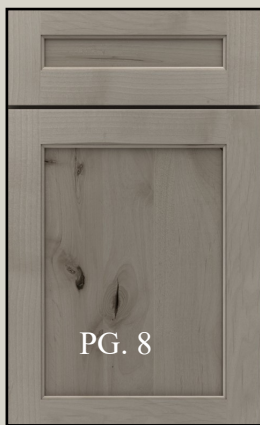
Visit us at

ThomasvilleCabinetry.com

Or

<https://www.THAHD.com>

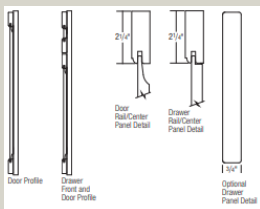
Patton



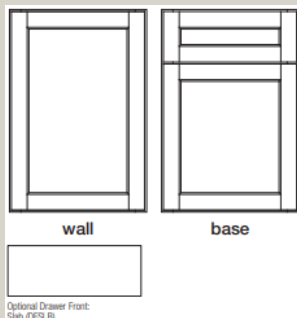
PG. 8

- Patton is a transitional style door with a subtle detail on the inside profile
- 5pc solid reverse raised door panel
- 5pc flat center panel drawer front
- Drawer fronts smaller than 5-3/4" high will have slab fronts

- Solid slab drawer front option (DFSLB)pg.50
- Solid slab drawer front top (DFSLBT)pg.50
- When maple color or brushed finishes are specified, the center panel will be MDF



- **Finished Ends Are Standard in ARTISAN**



Maple \$394 LF
Cherry \$450 LF
Rustic Alder \$394 LF
Quarter Sawn Oak \$450 LF

Introducing 3/8" Integrated Solid Back Construction in Artisan



- **THE ARTISAN COLLECTION'S BOX CONSTRUCTION IS CHANGING Effective 01/09/23** PG. 34
- Explaining the advantages of Thomasville's Superior Construction is even easier now that Artisan's construction aligns with Studio 1904 and Classic
- **Here are a few benefits of our construction:**
 - Easier Installation: The entire back of our cabinet can be used when installing, unlike other brands that use a hang rail and thin piece of furniture core. Our backs are held securely in a dadoed groove in the end panel using white woodworkers glue, then furniture stapled to provide a strong, durable joint
 - No Center Stiles in wall cabinets 38-3/4" wide or less, making it easier to store and access contents within the cabinets without compromising the structural integrity

TH&A

Todd Haley & Associates

Adam Johnson
678-736-9934
ajohnson@toddhaley.com

Paul Cunningham
615-681-2686
pcunningham@toddhaley.com

Christian Pella
803-846-1902
cpella@toddhaley.com

What is your “Favorite Thing” about Artisan Cabinetry?

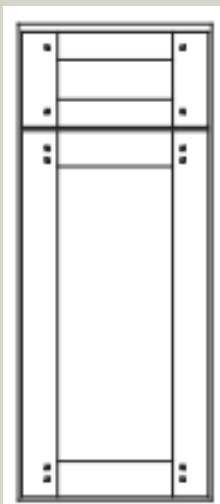
As a busy designer, I really appreciate that Artisan’s return policy is so liberal. It’s great to know that they have my back. I also like the unique finishes, and of course, the All Plywood construction as a standard feature is really important to customers.



Chris Sanders-HD0742 Chattanooga, TN

Modifications

FPEG –faux peg



- Add a rustic detail to five Artisan doors
- Cabinets in these available styles can be ordered with walnut pegs in the door/drawer rail: Eden, Cottage, Hendrix, Jansen, and Patton
- Door rails feature two pegs per corner, 5-pc drawer rails feature one peg per corner
- 20-20 Global Modification
- Not available in painted finishes , Antique Aquamarine, Cocoon, Cotton

Page 52

Crow, Gravity, Kettle, Monument, Snowdrift Latte, or Summit

- Not available on double wide/double tall integrated panels and integrated end panels
- Look for this door/drawer options modification chart

Door & Drawer Options											
ADRW	AOMD	CS	FEG	FPEG	MD	MFO	PRMD	SPLITDR	SPLITDRWS	TCP	TCG
✓	✓	✓	✓	✓	✓	✓	✓	✓	✓	✓	✓

Embellishments

SKU Alignment

Thomasville Artisan is making it easier for you to design across any framed Thomasville Collection which make its easy for your customers to upgrade their kitchen plan. We are introducing many new SKUs to the Artisan Collection that can also be found in Classic and Studio 1904 Collections.

Additions include new moulding, valances, embellishments, accessories, and a few new vanity models.

Get into the new Artisan Spec Book for 2023. Don’t have one yet? Contact your rep and get one ordered today! Here’s some of what you’ll see.

- 50- Stack Moulding kits starting on page 595. New offerings are highlighted in gray.
- 74 pages of Onlays, Island Legs and Posts, Pedestal Feet, Turned Posts, Corbels, and Valances starting on page 623
- 89 pages of Vanities

Pages 462-697

Thank you for selling Artisan Cabinetry!

We need & appreciate your business! Please visit your website <https://www.THAHD.com>.

TH&A

Todd Haley & Associates



MASTERBRAND
CABINETS, INC.