

# Thomasville® Classic

CABINETS



MASTER BRAND  
CABINETS, INC.

The Thomasville Report

March 2022

Visit us at  
[thomasvillecabinetry.com](http://thomasvillecabinetry.com)  
Or  
<https://www.THAHD.com>

## Costello P.O. Rustic Hickory



- ◇ Partial Overlay Veneer Recessed Panel Door
- ◇ 3/4" Solid Slab Drawer Front Std
- ◇ 13 Finishes Pg. 25
- ◇ Matching laminate ends Std except when unfinished is selected

**Rustic Hickory**  
**\$250/LF**

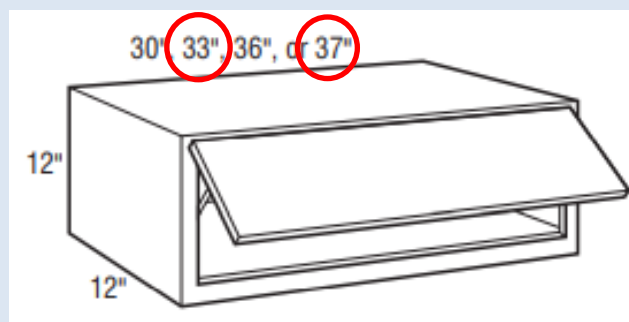
**Rustic Hickory is a strong, heavy hardwood known for distinctive graining patterns. Color will vary from nearly white to dark brown. Large knots can be black or brown in various shapes and sizes up to 3" in diameter. Open knots (through door) up to 3/4" diameter can be expected. Worm holes, pin holes and worm tracks can be expected. Grain can contain sapwood, minerals and some checking. Doors, drawer fronts, and some selected trim will feature rustic characteristics. Other areas will utilize standard Hickory.**

## Wall Top Hinge **NEW Widths**

WTH33\_\_

WTH37\_\_

- Available in 12", 15", 18", 21" heights
- Depths- 12" and 24"
- Depths can be reduced (minimum of 9")
- Cabinet may utilize one or two lift mechanisms depending on door size and weight
- Grain on doors 30-37"w run horizontal; Faulkner has standard grain pattern
- Door opens a maximum of 107\*
- Lift mechanism not available for field installation



PGS. 86, 89, 93, 98

**TH&A**

Todd Haley & Associates

Adam Johnson  
678-736-9934

[ajohnson@toddhaley.com](mailto:ajohnson@toddhaley.com)

Paul Cunningham  
615-681-2686

[pcunningham@toddhaley.com](mailto:pcunningham@toddhaley.com)

Thomas D. Clarke, CKD  
225-240-0529

[tclarke@toddhaley.com](mailto:tclarke@toddhaley.com)

Ginny Edens  
770-424-7518

[gedens@toddhaley.com](mailto:gedens@toddhaley.com)



## What Designers are saying about Thomasville:

Jerry McGreer—Inverness, AL Home Depot #0875

Thomasville has always been a brand I could rely on, and the brand name itself has a lot of meaning to my customers. They know that it is high quality. I enjoy being able to design them a kitchen for value in Studio or deck it out in Classic.

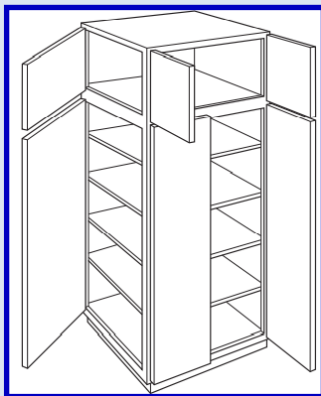


“You have to be very nimble and very open minded. Your success is going to depend on how you adapt”. Jeremy Stoppelman— CEO of Yelp

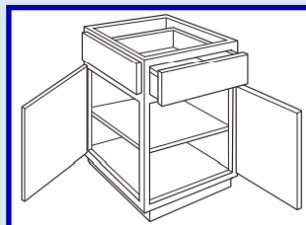
## MODIFICATIONS

### FACE FRAME AND DOOR ON END indicate L or R

FFDL; FFDR (FFDL shown below)



This modification is available on most wall, base, tall, and vanity cabinets.



This is a modification to the cabinets end panel. It creates a working door and frame on the end of a specified cabinet. Opposite end panel will be FPEB. Not available on both ends of cabinet. Doors will always be hinged on the back of the cabinets side.

#### End Panel Options

	AUTH	FFD	FPEB
	✓	✓	✓
	✓		✓

Pg. 48

## EMBELLISHMENTS

### SQUARE ISLAND LEG

Pg. 451

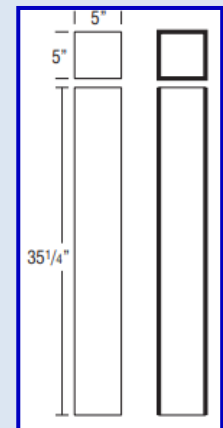
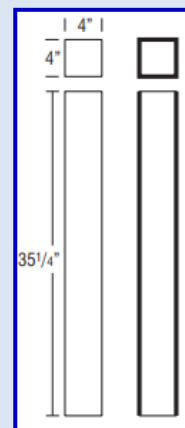
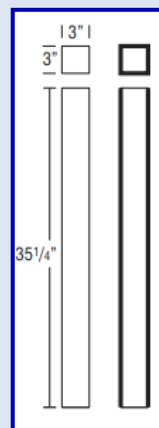
- Trimmable; Finished edges indicated by bold lines
- Ordering details page 409. No changes or cancellations.



JSQISLLEG3

JSQISLLEG4

JSQISLLEG5



#### Technique Options

<input type="checkbox"/>	Distressing	Heirlooming
<input checked="" type="checkbox"/>		✓

#### Availability Options

	Cherry	Maple	MDF	Oak	Painted	PureStyle™	Rustic Alder	Rustic Hickory	Specialty Laminate
	✓	✓	box color	✓			Alder		box color
					✓	box color			

Thank you for selling your House Brand, Thomasville Cabinetry! We are your partners to help you with the sale every time! Visit your web page <https://www.THAHD.com>

# TH&A

Todd Haley & Associates



MASTER BRAND  
CABINETS, INC.