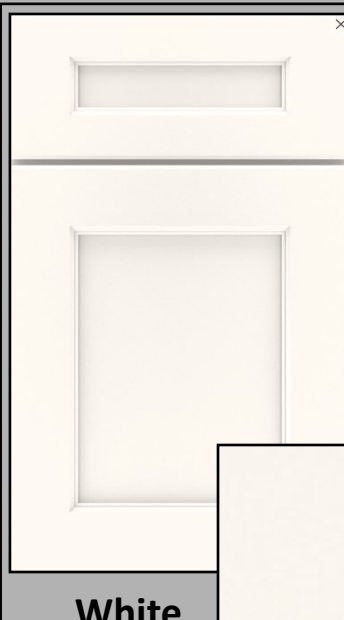
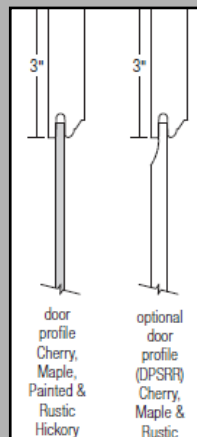


Everly Painted White

Wall Double Door 39"



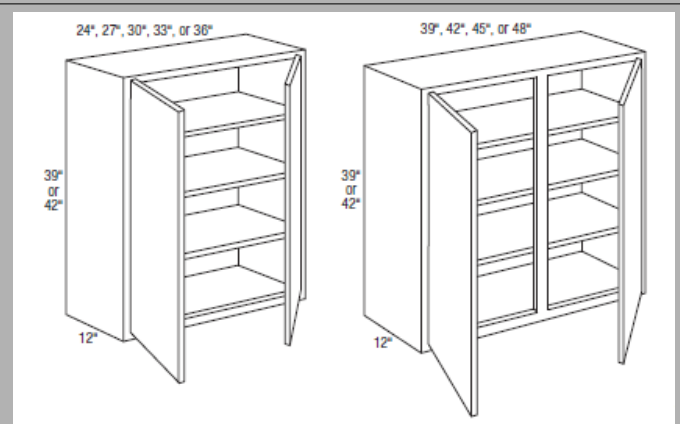
Maple, Painted,
\$213 LF



White

- Veneer Flat Panel
- 1 1/4" Full Overlay
- 3" Wide Door Rails
- 3/4" Solid Profiled Drawer Front
- Optional 5-Piece

Pg. 13



39" High, Butt Doors

- W2439
- W2739
- W3029
- W3329
- W3639

39" High, Center Stile

- W3939
- W4239
- W4539
- W4839CS

Page 108



Thomasville Studio 1904

a modern, vintage vibe cabinetry offering that is exclusive to Home Depot!

Thomasville Studio 1904
CABINETRY



Things I Love About Studio! *Gail Olney HD_0138 Griffin, GA*

“I am happier with *Thomasville!* Love the options!”

“Do what you can, with what you have, where you are”

~ Theodore Roosevelt

Modifications

ADDTK

- Creates a 4 1/2" toekick on the front of cabinet. Cabinet top changes to use I-Beam construction when ADDTK is selected. ADDTK with reduced depth is available on cabinets 9" deep or larger.
- Peninsula cabinets are available with ADDTK 15" deep and larger. Depths of 14" and less will not have ADDTK available. Available with compatible toekick modifications.

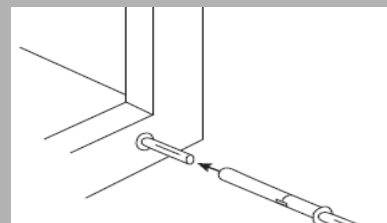


PG.63

Embellishments

TOUHLATCH

- Nylon gray mechanism bumper tip
- Face frame will need to be field drilled for insertion of the TOUHLATCH, requires 25/64" (10mm) drill bit.
- Can be field adjusted for door gap depth, no tools required.
- For use on full overlay door styles only.
- Requires a soft touch to open the door, and door must be pushed closed to reset the TOUHLATCH mechanism.
- Only use on hinged doors, and can be used without decorative hardware. Not compatible with non-hinged doors such as pull-outs, Wall Vertical-lift (WVL..).
- For drawers, pull-outs, and other non-compatible cabinets, PULLH105, PULLH106, and PULLH107 are recommended (see page 462).



PG. 466

Thank you for selling your House Brand, Thomasville Cabinetry! We are your partners to help you with the sale every time! Visit your web page <https://www.THAHD.com>

TH&A

Todd Haley & Associates



MASTERBRAND
CABINETS, INC.