

Thomasville® Classic

CABINETS

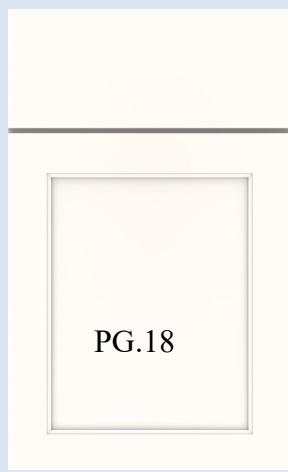
The Thomasville Report

Visit us at
thomasvillecabinetry.com
 Or
<https://www.THAHD.com>

MASTERBRAND

April 2023

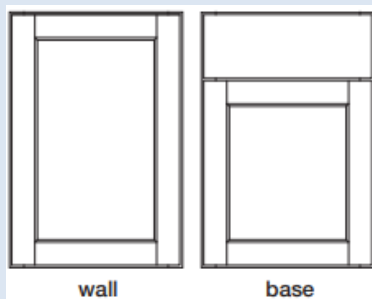
PATTON



PG.18

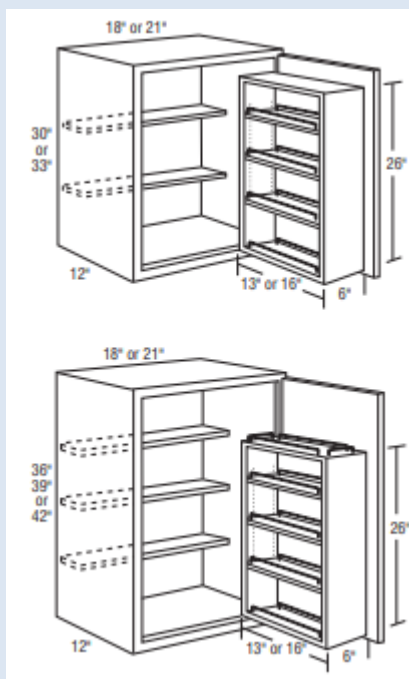
Maple Polar Cap

- Patton is a shaker style door with just a bit of detail to the inside profile making it a great alternative to a true Shaker door
- Perfect for transitional settings
- 1-1/4" full overlay Veneer flat Panel door
- Optional Solid Reverse Raised panel door (DPSRR)
- 3/4" slab drawer front standard



Maple \$298 LF
 Rustic Alder \$298 LF
 Cherry \$323 LF

Wall Spice Rack Cabinet



WSR1830 L or R
 WSR2130 L or R
 WSR1833 L or R
 WSR2133 L or R

Page 140

WSR1836 L or R
 WSR2136 L or R
 WSR 1839 L or R
 WSR 2139 L or R
 WSR1842 L or R
 WSR2142 L or R

- Keep your spices organized and within reach
- Actual swing-out unit regardless of cabinet height is 13" or 16" wide, 26" high, and 6" deep
- Field installed swing-out is natural finished wood, 3 adjustable and 1 fixed chrome railed shelves; adj shelves are 4-1/2" deep
- Shelves—15 lbs. maximum weight capacity

TH&A

Todd Haley & Associates

Adam Johnson
 678-736-9934

ajohnson@toddhaley.com

Paul Cunningham
 615-681-2686

pcunningham@toddhaley.com

Christian Pellage
 803-846-1902

cpellage@toddhaley.com



What Designers are saying about Thomasville: Ray Riden HD3642 Statesville, NC



“Thomasville Classic is my most-used collection. It has a lot of selections. I especially like the stacked moulding. The drawer organization catches everyone's eyes when visiting the showroom”.

MODIFICATIONS

MIP-MATCHING INTERIOR PLYWOOD PG.51

Modifies the cabinet interior and end panel exterior of most wall, base, tall, and vanity cabinets to matching finished veneer plywood. Cabinet top and bottom exterior on wall cabinets is also matching finished veneer plywood*.

Cabinet construction features plywood* ends, top, bottom, and back. Shelves are upgraded to full depth 3/4" veneered plywood*.

Interior wood accessories feature a natural finish and will not match cabinet exterior.

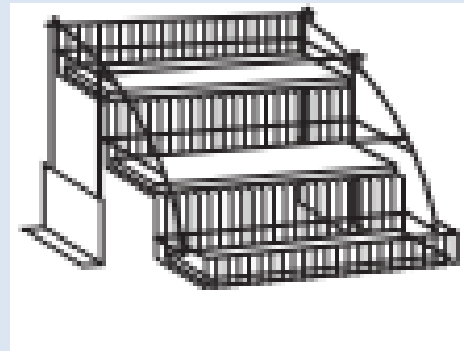
When a cut-for-glass or mullion door option is chosen in 20-20, Matching Interior Plywood (**MIP**) is a preselected option. If **MIP** is not desired, it can be deselected by choosing **NOTMIP**.

Most end panels with fillers attached can also be selected with **MIP**. **MIP** will replace standard panel material with veneer plywood* finished on both sides.

*All-Plywood components meet ANSI/HPVA HP-1 standards, and may contain MDF or particleboard

EMBELLISHMENTS

SPD18-SPICE RACK PULL DOWN



- Spice rack pull down can be installed on the floor of a wall cabinet 18" wide or wider
- Not intended for installation on an adjustable shelf
- Extends 3-3/4" below and 9-1/4" in front of the cabinet box when fully extended
- Spick rack dimensions: 8-15/16" high, 14-13/16" wide, 10-5/16" deep
- Maximum weight capacity: 15 lbs.

PG.477

Thank you for selling your House Brand, Thomasville Cabinetry! We are your partners to help you with the sale every time! Visit your web page <https://www.THAHD.com>

TH&A
Todd Haley & Associates

MASTER BRAND
CABINETS, INC.