

Thomasville[®] Artisan

CABINETRY



MASTERBRAND
CABINETS, INC.

The Artisan Focus

January 2022

Visit us at

ThomasvilleCabinetry.com

Or

<https://www.THAHD.com>

Maura Maple Seafoam



Seafoam

- 5-piece Mitered Solid Reverse Raised Panel Door
- Full Overlay Door Style
- 5-piece Mitered Drawer Front with Flat Center Panel
- Drawer Fronts smaller than 5 3/4" high will have Slab Front.
- Solid Slab Drawer Front (DFS LB) available. See page 50.
- Solid Slab Drawer Front Top (DFS LB T) available. See page 50.

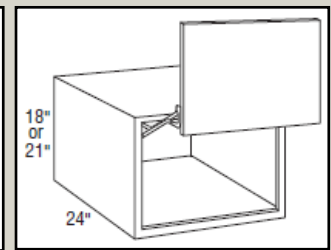
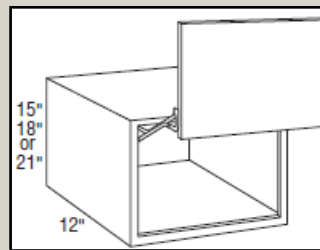
• 1/8" EXL and/or EXR options recommended with altered depths, adjacent cabinets with opposite hinging, and cabinet adjacent to a fixed wall.

• When Maple Color or Brushed finishes are specified, the center panels of the selected style may be constructed of Medium Density Fiberboard (MDF). MDF provides a smoother finish when painted, and is more resistant to warping, expansion, and contraction.

Page 8

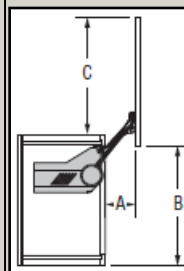
Maple/ Rustic Alder \$409 LF
Cherry/QSO \$460 LF

Wall Cabinet with Vertical-Lift Top Hinge and Stay Lift



12" Deep Unit Available from 24"-36" wide in 3" increments
24" Deep Units Available in 30" & 36" wide only.

- Grain on center panels and slab doors will run horizontally and door rail configuration on non-miter doors will be unique from adjacent cabinet doors.
- Additional accessories available for Automatic Opening Mechanism option, refer to page 747.
- Not available with art glass.
- AOMD option is not available when used with the following door styles: Addington, Camden, Cottage, Maura, Plaza, and Portman.
- 24" deep cabinets must be fully supported by screws installed in a structural member in the ceiling or soffit, and into adjacent cabinets.



12" Deep Door Clearances

	Cabinet Height	A	B	C
Full Overlay	15"	5 3/4"	13 13/16"	13 3/8"
	18"	8 1/4"	20 13/16"	20 3/8"
	21"	7"	17 5/16"	16 7/8"

24" Deep Door Clearances

	Cabinet Height	A	B	C
Full Overlay	18"	8 1/4"	20 13/16"	20 3/8"
	21"	7"	17 5/16"	16 7/8"

Page 134

TH&A

Todd Haley & Associates

Adam Johnson
678-736-9934
ajohnson@toddhaley.com

Ginny Edens
770-424-7518
gedens@toddhaley.com

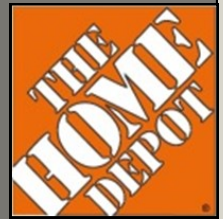
Paul Cunningham
615-681-2686
pcunningham@toddhaley.com

Thomas D. Clarke, CKD
225-240-0529
tclarke@toddhaley.com



**What is your “Favorite Thing” about Artisan Cabinetry?
Preston Barnum HD_2902 Jackson, Ms.**

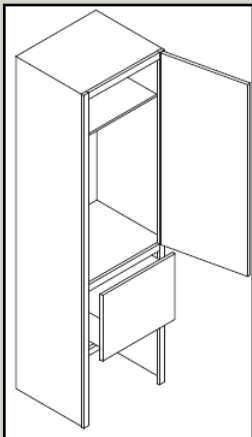
“Artisan is my go-to line when I want quality construction, design flexibility and the best finish options. The all-plywood construction and Blum hardware let me know I am working with the best.”



Congratulations to my neighbor who reached a new culinary milestone by setting off both of his neighbors smoke alarms! ~ unknown

Modification: STORB

Storage Open Rail Base



- With this option, the 4 1/2" sub-toekick on base and tall cabinets is eliminated and the face frame stiles, end panels, and backs are extended down the amount specified.
- This option is available in 1/4" increments from 4 3/4" to 18".
Example: When selecting an EET1878 with the STORB modification of 18", the overall cabinet height will be 91 1/2" (i.e. 78-4 1/2+18=91 1/2).
- Available on EET____, EEDB__, and EEOB__ only. These codes located in other room cabinetry.

Page 95

Embellishments

AFE-ISL-AN35



- 8" wide x 17 3/4" deep x 35 1/2" high.
- If ordered in Rustic Alder, will not feature rustic characteristics.
- All ornate details are hand-carved.
- Not available in Quartersawn Oak.
- All finishes and techniques are available.

PAGE 659

Thank you for selling Artisan Cabinetry!
We need & appreciate your business! Please visit your website <https://www.THAHD.com>.

TH&A

Todd Haley & Associates



MASTERBRAND
CABINETS, INC.