

# Thomasville<sup>1904</sup> Studio

CABINETS

Visit us at [thomasvillecabinetry.com](http://thomasvillecabinetry.com)

or

<https://www.THAND.com>

May 2022 Training Agenda

MASTER BRAND  
CABINETS, INC.

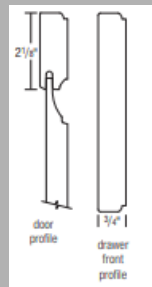


## Miles Maple Whiskey Black

## Tall Bookcase with Straight Valance



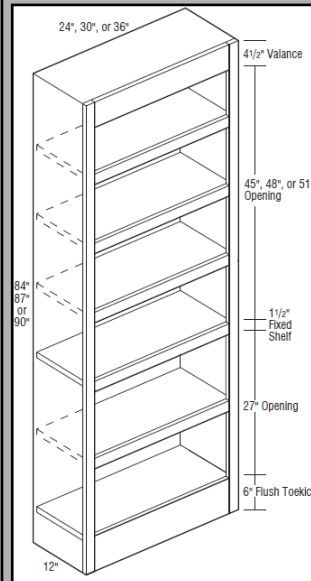
**Solid Raised Center Panel with Slab Drawer Front.**



Maple &  
Painted  
\$253 LF

- Square Wall and Square Base Doors
- Solid Raised Panel
- 1/2" Partial Overlay
- 3/4" Solid Profiled Drawer Front

**Pg. 17**



**Page 319**

**84" High**  
T248412BCVV  
T308412BCVV  
T368412BCVV  
**87" High**  
T248712BCVV  
T308712BCVV  
T368712BCVV  
**90" High**  
T249012BCVV  
T309012BCVV  
T369012BCVV

- 84" and 87" high include four adjustable shelves and one fixed shelf.
- 90" high includes five adjustable shelves and one fixed shelf.
- Matching Interior Plywood (MIP) standard.
- Ends, tops, bottoms, and backs are veneer plywood.
- Face frame has a profiled inside edge.
- Also available in 93" and 96" heights.
- 93" has five adjustable shelves, 96" has six adjustable shelves.

**TH&A**

Todd Haley & Associates

Adam Johnson  
678-736-9934

[ajohnson@toddhaley.com](mailto:ajohnson@toddhaley.com)

Paul Cunningham  
615-681-2686

[pcunningham@toddhaley.com](mailto:pcunningham@toddhaley.com)

Thomas D. Clarke, CKD  
225-240-0529

[tclarke@toddhaley.com](mailto:tclarke@toddhaley.com)

Ginny Edens  
770-424-7518

[gedens@toddhaley.com](mailto:gedens@toddhaley.com)



Thomasville Studio 1904

a modern, vintage vibe cabinetry offering that is exclusive to Home Depot!

Thomasville Studio 1904  
CABINETRY



## Things I Love About Studio! *Joe Landry HD\_0349 Kenner, La.*

"Studio offers a wider variety of options that the competition doesn't, at an affordable price point."

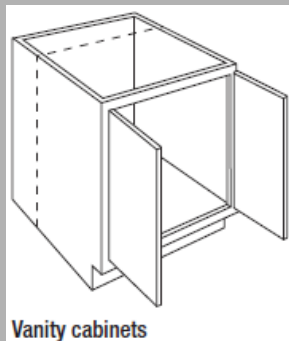
# Onion Rings are just Vegan Donuts.

## Modifications

### Increased Depth

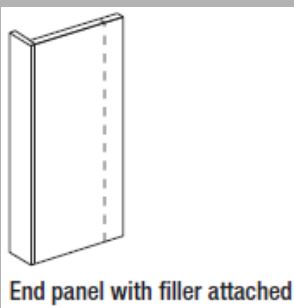
#### For most Wall & Vanity cabinets:

Increases the depth of wall and vanity cabinets in 3" increments to a maximum depth of 24". Increased depth wall cabinets should be either floor mounted or stacked to maintain stability. Any specified shelving is included and is always full depth. Wall peninsula cabinets may be increased in 3" increments to 18" maximum. Drawer depth will not change.

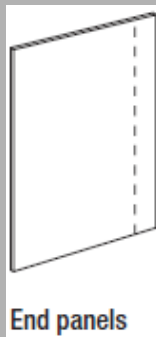


Vanity cabinets

**End Panels:** Increases the depth of end panels in 3" increments to a maximum depth of 30".



End panel with filler attached



End panels

PG.53

## Embellishments

### PULLH129



C/C: 128mm

L: 6 3/8"

W: 7/16"

P: 1 1/8"

Pairs best with KNOBH135 or PULLH131

PG. 483

Thank you for selling your House Brand, Thomasville Cabinetry! We are your partners to help you with the sale every time! Visit your web page <https://www.THAHD.com>

# TH&A

Todd Haley & Associates



MASTERBRAND  
CABINETS, INC.